



ERCOT Grid Operations
Wind Integration Report : 12/15/2015

Current Daily Values:

Peak Load	38,603 MW
Peak Load Hour (HE)	19
Wind at Peak Load Hour	6,577 MW

Max Wind	11,437 MW
Max Wind Time	00:00
Penetration at Max Wind Time	38.04 %

Max Wind Penetration	39.50 %
Max Wind Penetration Time	01:19
Wind Generation at Max Wind Penetration Time	11,206 MW

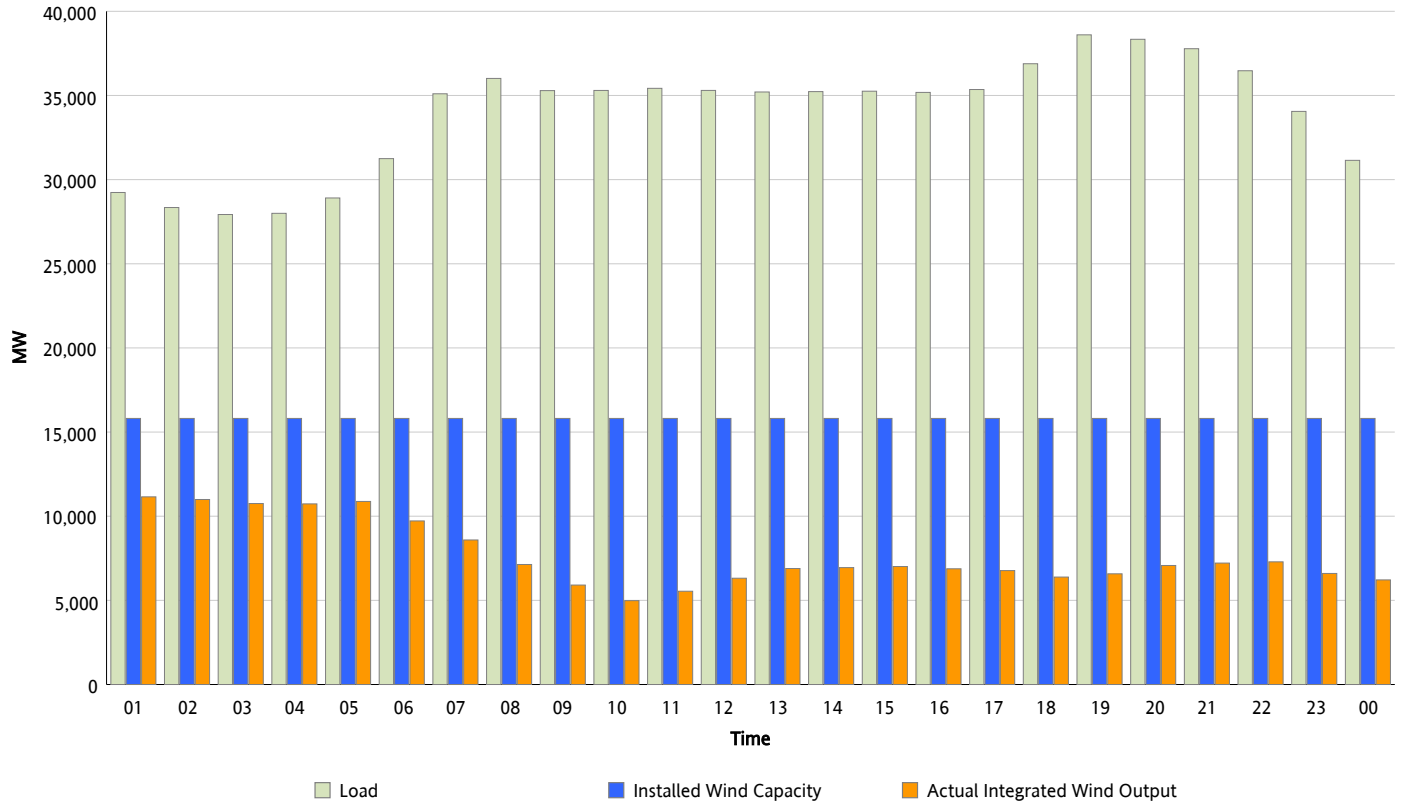
All Time Record Values:

Record Wind Generation	12,971 MW
Record Wind Generation Time	11/25/2015 21:10
Penetration at Record Wind Generation Time	36.86 %

Record Wind Penetration	43.55 %
Record Wind Penetration Time	11/26/2015 02:36
Wind Generation at Record Wind Penetration	11,649 MW

Hourly Average Actual Load vs. Actual Wind Output

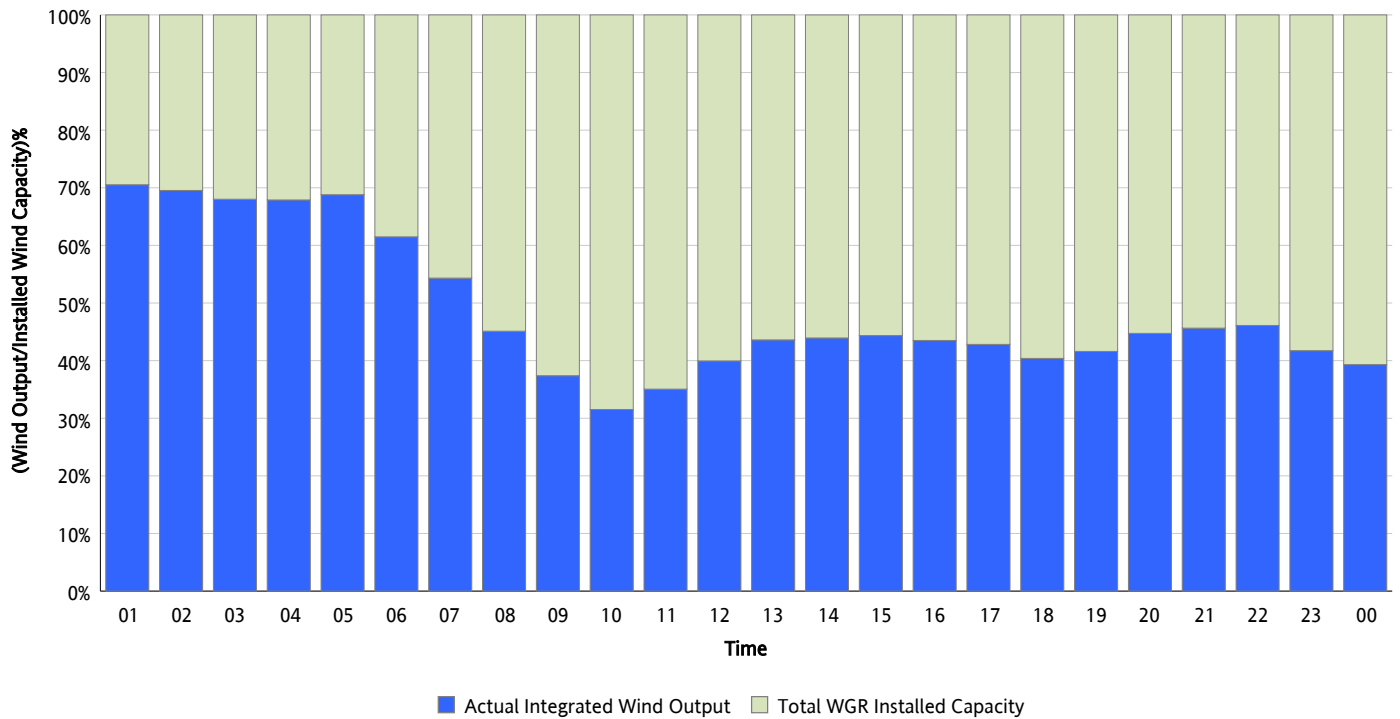
12/15/2015



** Wind Record and Wind Max represent instantaneous values and the rest of the values are integrated over the hour.
Capacity numbers used in the graphs are based on the expected commercial operation date of each Wind Generation Resource.*

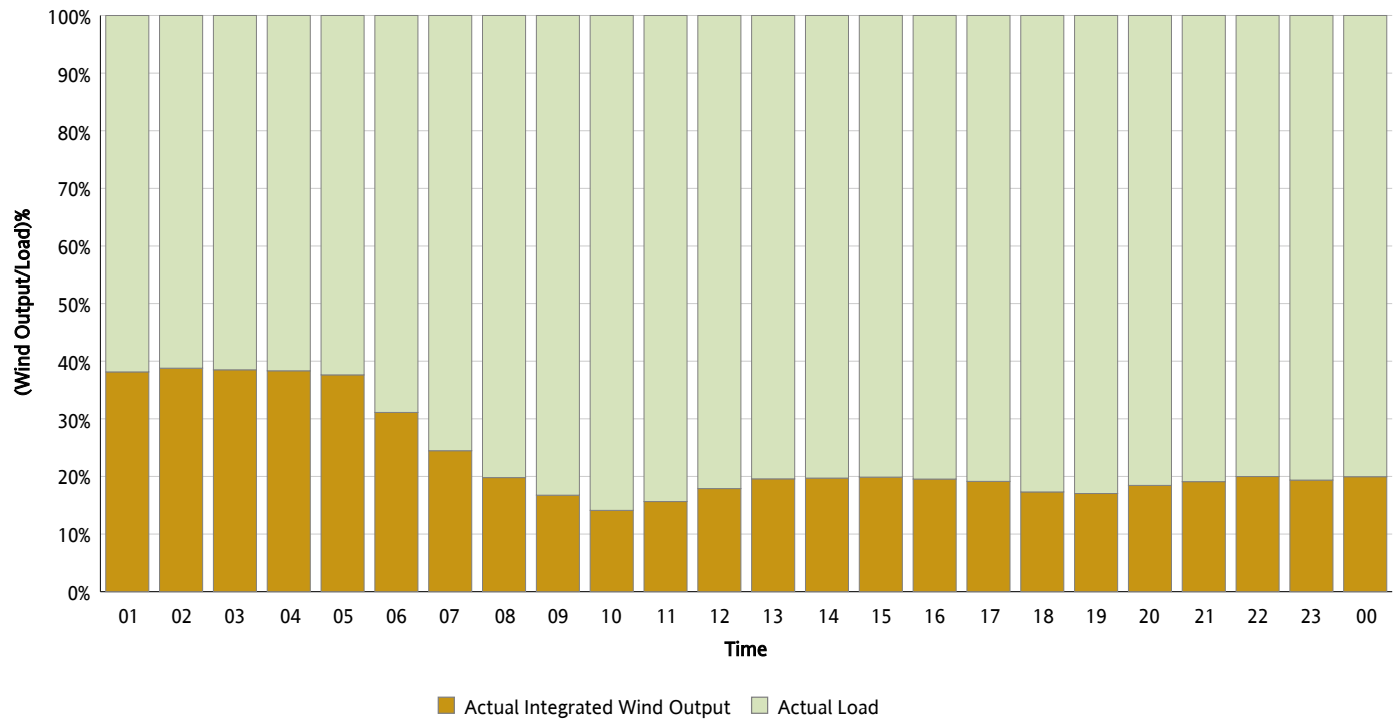
Actual Wind Output as a Percentage of the Total Installed Wind Capacity

12/15/2015



Actual Wind Output as a Percentage of the ERCOT Load

12/15/2015



ERCOT Load vs. Actual Wind Output

12/08/2015 - 12/15/2015

